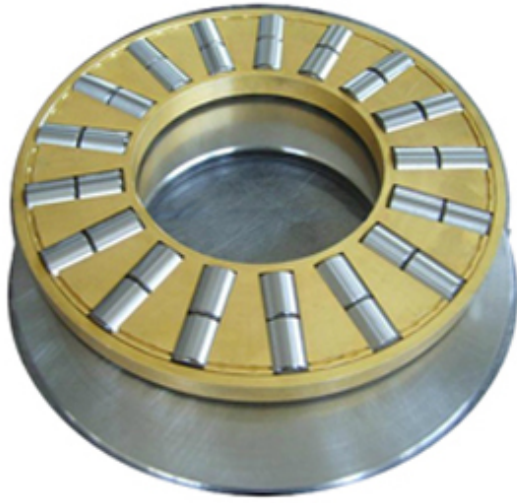




# CONSOLIDATED BEARING JAPAN LTD



T-745 Bearing 2D drawings and 3D CAD models

## CONSOLIDATED BEARING T-745 Thrust Roller Bearing

Bearing No. T-745

Category	Thrust Roller Bearing
Inventory	1.0
Manufacturer Name	CONSOLIDATED BEARING
Minimum Buy Quantity	N/A
Weight	15.44
EAN	0644075099639
Product Group	B04144
Rolling Element	Cylindrical Roller Bearing
Self Aligning	No
Component Description	Roller Assembly plus Raceways
Thrust Bearing	Yes
Single or Double Direction	Single Direction
Banded	No
Cage Material	Machined Bronze
Precision Class	ABEC 1   ISO P0
Other Features	Double Row   Housing Side OD 10.938 In
Long Description	6" Bore 1; 6-1/16" Bore 2; 11" Outside Diameter; 2" Height; Cylindrical Roller Bearing; Single Direction; Not Self Aligning; Not Banded; Machined Bronze Cage; ABEC 1   ISO P0; Roll
Inch - Metric	Inch



## CONSOLIDATED BEARING JAPAN LTD

Category	Thrust Roller Bearings
UNSPSC	31171507
Harmonized Tariff Code	8482.50.00.00
Noun	Bearing
Keyword 3	Cylindrical
Keyword String	Thrust Roller Cylindrical
Manufacturer URL	<a href="http://www.consbrgs.com">http://www.consbrgs.com</a>
Manufacturer Item Number	T-745
Weight / LBS	34
Bore 1	6 Inch   152.4 Millimeter
D	11 Inch   279.4 Millimeter
Overall Height with Aligning Washer	0 Inch   0 Millimeter
Bore 2	6.062 Inch   153.975 Millimeter
Height	2 Inch   50.8 Millimeter