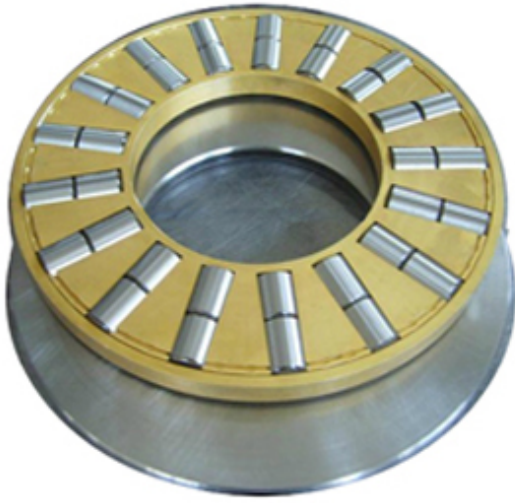




CONSOLIDATED BEARING JAPAN LTD



T-617 Bearing 2D drawings and 3D CAD models

CONSOLIDATED BEARING T-617 Thrust Roller Bearing

Bearing No. T-617

Category	Thrust Roller Bearing
Inventory	2.0
Manufacturer Name	CONSOLIDATED BEARING
Minimum Buy Quantity	N/A
Weight	0.77
EAN	0644075099356
Product Group	B04144
Rolling Element	Cylindrical Roller Bearing
Self Aligning	No
Component Description	Roller Assembly plus Raceways
Thrust Bearing	Yes
Single or Double Direction	Single Direction
Banded	No
Cage Material	Machined Bronze
Precision Class	ABEC 1 ISO P0
Other Features	Double Row Housing Side OD 3.551 In
Long Description	2" Bore 1; 2.087" Bore 2; 3-5/8" Outside Diameter; 1" Height; Cylindrical Roller Bearing; Single Direction; Not Self Aligning; Not Banded; Machined Bronze Cage; ABEC 1 ISO P0; Ro
Inch - Metric	Inch
Category	Thrust Roller Bearings



CONSOLIDATED BEARING JAPAN LTD

UNSPSC	31171507
Harmonized Tariff Code	8482.50.00.00
Noun	Bearing
Keyword 3	Cylindrical
Keyword String	Thrust Roller Cylindrical
Manufacturer URL	http://www.consbrgs.com
Manufacturer Item Number	T-617
Weight / LBS	1.7
Overall Height with Aligning Washer	0 Inch 0 Millimeter
D	3.625 Inch 92.075 Millimeter
Bore 2	2.087 Inch 53.01 Millimeter
Height	1 Inch 25.4 Millimeter
Bore 1	2 Inch 50.8 Millimeter